



Setting the Standard for Wear!

R & H Chrome Alloy ROLLERS • SHAKERS • SPROCKETS

Learn more - www.rhmachine.com 1-800-321-6568

R & H Machine provides rollers, shakers, and sprockets to fit most potato, sugar beet, garlic, and tomato-harvesting equipment. All of our parts are made of solid High Chrome Alloy to give superior life and dependability, which result in reduced down-time.

HOOKED CHAIN PARTS

R & H Machine provides parts to fit conventional hooked chain. We make tapered nose cones and rollers for the front of the machine, shakers, rollers, and sprockets for all areas of the harvester. Our parts not only last longer, but also help prolong the life of the chain. Our parts are harder and smoother than the chain, so they don't create as much wear in the areas where the chain touches the parts.

BELTED CHAIN PARTS

R & H Machine also has rolling stock to fit belted chain. We have sprockets, shakers, rollers, and nose cones to fit most sizes of belted chain. Our parts will also help your belted chain last longer to further reduce the cost of digging.

TOMATO PARTS

R & H Machine has an assortment of belted sprockets to fit your tomato harvester. These parts keep you running, cutting your down-time and increasing your productivity.

GARLIC PARTS

R & H Machine also provides parts for the garlic industry. We offer nose cones, rollers, and sprockets to help reduce down-time on your garlic machine.

SUGAR BEET PARTS

R & H Machine offers sprockets and rollers to fit beet harvesters. These parts will last several seasons, helping to reduce your operating costs.

NOSE CONES and ROLLERS



RH 601 NOSE ROLLER

Pitch: 1.25"
Diameter: 3-1/2"

RH601-765A - assembled with SPINDLE & 5/8" WASHER
RH601-766A - assembled with SPINDLE & 3/4" WASHER



RH 602 NOSE ROLLER - with 3 BUMPS

Diameter: 4"

RH602-765A - assembled with SPINDLE & 5/8" WASHER
RH602-766A - assembled with SPINDLE & 3/4" WASHER



RH 605 TAPERED NOSE CONE

Height: 3-5/8"
Flange diameter: 4-7/8"

RH605-705A - assembled with SPINDLE & 5/8" WASHER
RH605-706A - assembled with SPINDLE & 3/4" WASHER



RH 606 NOSE ROLLER - SMOOTH

Diameter: 4"

RH606-765A - assembled with SPINDLE & 5/8" WASHER
RH606-766A - assembled with SPINDLE & 3/4" WASHER



RH 607 NOSE ROLLER

Pitch: 1.56"
Diameter: 4"

RH607-765A - assembled with SPINDLE & 5/8" WASHER
RH607-766A - assembled with SPINDLE & 3/4" WASHER



RH 608 NOSE ROLLER

Pitch: 1.76" or 1.88"
Diameter: 4"

RH608-765A - assembled with SPINDLE & 5/8" WASHER
RH608-766A - assembled with SPINDLE & 3/4" WASHER



RH 609 NOSE ROLLER - HOOKS DOWN

Diameter: 5-1/4"

RH609-765A - assembled with SPINDLE & 5/8" WASHER
RH609-766A - assembled with SPINDLE & 3/4" WASHER



RH 611 BELTED NOSE ROLLER

Height: 3-1/2"
Flange diameter: 5-1/2"

RH611-705A - assembled with SPINDLE & 5/8" WASHER
RH611-706A - assembled with SPINDLE & 3/4" WASHER

R & H Chrome Alloy ROLLERS • SHAKERS • SPROCKETS

CARRIERS and ROLLERS

RH 610 WIDE FLANGE CONE

Height: 3-1/4"
Diameter:
Flange: 6-3/4"
Cone: 3-1/2"



RH610-705A - assembled with SPINDLE & 5/8" WASHER
RH610-706A - assembled with SPINDLE & 3/4" WASHER

RH 616 CARRIER ROLLER

Height: 2-1/4"
Diameter:
Flange: 5"
Body: 3"



RH616-744A - assembled with SPINDLE & 1/2" WASHER
RH616-745A - assembled with SPINDLE & 5/8" WASHER

RH 617 4" ROLLER

Diameter: 4"



RH617-714A - assembled with- 3-1/4" SPINDLE & 1/2" WASHER
RH617-715A - assembled with- 3-1/4" SPINDLE & 5/8" WASHER
RH617-724A - assembled with- 2-9/16" SPINDLE & 1/2" WASHER
RH617-725A - assembled with- 2-9/16" SPINDLE & 5/8" WASHER
RH617-744A - assembled with- 2" SPINDLE & 1/2" WASHER
RH617-745A - assembled with- 2" SPINDLE & 5/8" WASHER

RH 618 5" ROLLER

Diameter: 5"



RH618-714A - assembled with- 3-1/4" SPINDLE & 1/2" WASHER
RH618-715A - assembled with- 3-1/4" SPINDLE & 5/8" WASHER
RH618-724A - assembled with- 2-9/16" SPINDLE & 1/2" WASHER
RH618-725A - assembled with- 2-9/16" SPINDLE & 5/8" WASHER
RH618-744A - assembled with- 2" SPINDLE & 1/2" WASHER
RH618-745A - assembled with- 2" SPINDLE & 5/8" WASHER

RH 620 4" ELEVATOR ROLLER

Diameter: STEP ROLLER
Flange: 4-5/8"
Step: 3-3/8"



RH620-754A - assembled with SPINDLE & 1/2" WASHER
RH620-755A - assembled with SPINDLE & 5/8" WASHER

RH 621 6-1/2" ELEVATOR ROLLER

Diameter: STEP ROLLER
Flange: 6-1/2"
Step: 4"



RH621-754A - assembled with SPINDLE & 1/2" WASHER
RH621-755A - assembled with SPINDLE & 5/8" WASHER

SHAKERS

RH 627 4-POINT SHAKER

Pitch: 2" or 50mm
Diameter: 5-1/8"



RH627-714A - assembled with- 3-1/4" SPINDLE & 1/2" WASHER
RH627-715A - assembled with- 3-1/4" SPINDLE & 5/8" WASHER
RH627-724A - assembled with- 2-9/16" SPINDLE & 1/2" WASHER
RH627-725A - assembled with- 2-9/16" SPINDLE & 5/8" WASHER
RH627-744A - assembled with- 2" SPINDLE & 1/2" WASHER
RH627-745A - assembled with- 2" SPINDLE & 5/8" WASHER

RH 628 4-POINT SHAKER

Pitch: 1.56", 40mm or 42mm
Diameter: 4"



RH628-714A - assembled with- 3-1/4" SPINDLE & 1/2" WASHER
RH628-715A - assembled with- 3-1/4" SPINDLE & 5/8" WASHER
RH628-724A - assembled with- 2-9/16" SPINDLE & 1/2" WASHER
RH628-725A - assembled with- 2-9/16" SPINDLE & 5/8" WASHER
RH628-744A - assembled with- 2" SPINDLE & 1/2" WASHER
RH628-745A - assembled with- 2" SPINDLE & 5/8" WASHER

RH 629 4-POINT SHAKER

Pitch: 1.76", 1.88" or 45mm
Diameter: 4-3/8"



RH629-714A - assembled with- 3-1/4" SPINDLE & 1/2" WASHER
RH629-715A - assembled with- 3-1/4" SPINDLE & 5/8" WASHER
RH629-724A - assembled with- 2-9/16" SPINDLE & 1/2" WASHER
RH629-725A - assembled with- 2-9/16" SPINDLE & 5/8" WASHER
RH629-744A - assembled with- 2" SPINDLE & 1/2" WASHER
RH629-745A - assembled with- 2" SPINDLE & 5/8" WASHER

RH 630 3-POINT SHAKER

Diameter: 5-1/8"



RH630-714A - assembled with- 3-1/4" SPINDLE & 1/2" WASHER
RH630-715A - assembled with- 3-1/4" SPINDLE & 5/8" WASHER
RH630-724A - assembled with- 2-9/16" SPINDLE & 1/2" WASHER
RH630-725A - assembled with- 2-9/16" SPINDLE & 5/8" WASHER
RH630-744A - assembled with- 2" SPINDLE & 1/2" WASHER
RH630-745A - assembled with- 2" SPINDLE & 5/8" WASHER

RH 631 OVAL SHAKER

Diameter: 5-1/2" x 2-3/4"



RH631-714A - assembled with- 3-1/4" SPINDLE & 1/2" WASHER
RH631-715A - assembled with- 3-1/4" SPINDLE & 5/8" WASHER
RH631-724A - assembled with- 2-9/16" SPINDLE & 1/2" WASHER
RH631-725A - assembled with- 2-9/16" SPINDLE & 5/8" WASHER
RH631-744A - assembled with- 2" SPINDLE & 1/2" WASHER
RH631-745A - assembled with- 2" SPINDLE & 5/8" WASHER

R & H Chrome Alloy ROLLERS • SHAKERS • SPROCKETS

SPINDLES

RH 705 NOSE CONE SPINDLE - for 5/8" bolt

RH 706 NOSE CONE SPINDLE - for 3/4" bolt

Height: 2-3/4"
Stand-off: 5/8"



RH 714 ROLLER SPINDLE - for 1/2" bolt

RH 715 ROLLER SPINDLE - for 5/8" bolt

Height: 3-1/4"
Stand-off: 1-7/8"

RH 724 ROLLER SPINDLE - for 1/2" bolt

RH 725 ROLLER SPINDLE - for 5/8" bolt

Height: 2-9/16"
Stand-off: 1-3/16"



RH 744 ROLLER SPINDLE - for 1/2" bolt

RH 745 ROLLER SPINDLE - for 5/8" bolt

Height: 2"
Stand-off: 5/8"

RH 754 ELEVATOR SPINDLE - for 1/2" bolt

RH 755 ELEVATOR SPINDLE - for 5/8" bolt

Height: 1-1/4"
Stand-off: 1/4"



RH 765 NOSE ROLLER SPINDLE - for 5/8" bolt

RH 766 NOSE ROLLER SPINDLE - for 3/4" bolt

RH 767 NOSE ROLLER SPINDLE - for 7/8" bolt

Height: 3-1/8"
Stand-off: 1-1/2"



RH 774 RUBBER ROLLER SPINDLE - for 1/2" bolt

Height: 3-1/4"
Stand-off: 1-9/16"



CAST WASHERS



RH 794
1/2" HOLE



RH 795
5/8" HOLE



RH 795 F
5/8" HOLE



RH 796
3/4" HOLE

NOTE: All washers are 1-3/4" diameter

URETHANE PARTS

RH 617.5 U 4-1/2" URETHANE ROLLER



Diameter: 4-1/2"

RH617.5U-714A

RH617.5U-715A

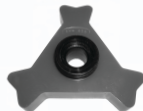
RH617.5U-724A

RH617.5U-725A

RH617.5U-744A

RH617.5U-745A

RH 630 U 3-POINT URETHANE SHAKER



Diameter: 5-1/8"

RH630U-714A

assembled with- 3-1/4" SPINDLE & 1/2" WASHER

RH630U-715A

assembled with- 3-1/4" SPINDLE & 5/8" WASHER

RH630U-724A

assembled with- 2-9/16" SPINDLE & 1/2" WASHER

RH630U-725A

assembled with- 2-9/16" SPINDLE & 5/8" WASHER

RH630U-744A

assembled with- 2" SPINDLE & 1/2" WASHER

RH630U-745A

assembled with- 2" SPINDLE & 5/8" WASHER

RH 631 U OVAL URETHANE SHAKER



Length: 6-1/4"
Width: 3-3/8"

RH631U-714A

RH631U-715A

RH631U-724A

RH631U-725A

RH631U-744A

RH631U-745A

R & H Chrome Alloy ROLLERS • SHAKERS • SPROCKETS

BEET DIGGER PARTS



RH 640 BEET-HARVESTER ROLLER

To fit: Parma beet harvester

Diameter:
Flange: 7"
Body: 5"

RH640-705A - assembled with SPINDLE & 5/8" WASHER

RH640-706A - assembled with SPINDLE & 3/4" WASHER

RH 645 DRIVE SPROCKET

To fit: Parma Beet Harvester

Diameter: 6-7/8"
Bore: 1-3/8" round
Pitch: 2.25"
Teeth: 10



RH 643 DRIVE SPROCKETS RH 644

To fit: Art's-Way and Heath beet diggers

Diameter:
Outside: 7-1/8"
Hub: 5"
Inside: 3"
Pitch: 2.375"
Teeth: 10



RH 643



RH 644

Diameter:
Outside: 7-1/8"
Hub: 6"
Inside: 3-9/16"
Pitch: 2.375"
Teeth: 10

GARLIC and TOMATO HARVESTER PARTS

RH 604 NOSE CONE

Height: 2-3/8"
Diameter: 3-5/8"
Bore: 1" square



RH 652 B-1 DRIVE SPROCKET -1" round bore

RH 652 B-1.25 DRIVE SPROCKET -1.25" round bore



Diameter: 4-5/8"
Pitch: 32 mm
Teeth: 12

RH 687 B DRIVE SPROCKET -1" round bore

RH 688 B DRIVE SPROCKET -1.25" round bore

Diameter: 4-1/4"
Pitch: 36mm
Teeth: 10



DE-VINER ROLLERS

RH 635 DE-VINER IDLER - with flange



Diameter:
Flange: 9-1/2"
Body: 6-7/8"

RH635-705A - assembled with SPINDLE & 5/8" WASHER

RH635-706A - assembled with SPINDLE & 3/4" WASHER

RH 636 DE-VINER ROLLER

Diameter: 8-3/4"



RH636-705A - assembled with -SPINDLE & 5/8" WASHER

RH636-706A - assembled with -SPINDLE & 3/4" WASHER

RH636-760A - assembled with -LONG SPINDLE & 5/8" WASHER

SPROCKETS for DE-VINER

RH 649 B DRIVE SPROCKET

To fit: Wemco

Diameter:
Outside: 7"
Hub: 5-1/2"
Inside: 3-3/4"
Pitch: 50mm
Teeth: 12



RH 650 DRIVE SPROCKET



Diameter: 9-5/8"
Bore: 2" round
Pitch: 5.06"
Teeth: 6

RH 651 DRIVE SPROCKET

Diameter: 9-3/4"
Bore: 2" round
Pitch: 6"
Teeth: 5



R & H Chrome Alloy ROLLERS • SHAKERS • SPROCKETS

SPROCKETS for HOOKED CHAIN

RH 655 DRIVE SPROCKET



Diameter: 5-7/8"
Bore: 2" square
Pitch: 1.56"
Teeth: 13

RH 657 DRIVE SPROCKET



Diameter: 6-1/4"
Bore: 2" square
Pitch: 1.75"
Teeth: 12

RH 658 DRIVE SPROCKET



Diameter: 6-3/4"
Bore: 2" square
Pitch: 1.88"
Teeth: 12

RH 665 DRIVE SPROCKET



Diameter: 5-7/8"
Bore: 2" round
Pitch: 1.56"
Teeth: 13
Key: 3/8"

RH 667 DRIVE SPROCKET - 2" round bore



Diameter: 6-1/8"
Bore: 2" round
Pitch: 1.75"
Teeth: 12
Key: 3/8" or 1/2"

RH 667-1.5 DRIVE SPROCKET - 1-1/2" round bore

Diameter: 6-1/8"
Bore: 1-1/2" round
Pitch: 1.75"
Teeth: 12
Key: 3/8"



RH 668 DRIVE SPROCKET

Diameter: 6-3/4"
Bore: 2" round
Pitch: 1.88"
Teeth: 12
Key: 3/8"



RH 669 DRIVE SPROCKET

Diameter: 4-1/2"
Bore: 2" round
Pitch: 1.56"
Teeth: 10
Key: 3/8"



RH 670 DRIVE SPROCKET

Diameter: 4-1/2"
Bore: 2" round
Pitch: 1.75"
Teeth: 9
Key: 3/8"



RH 673 DRIVE SPROCKET - 1-1/4" square bore

Diameter: 4-1/2"
Bore: 1-1/4" square
Pitch: 1.56"
Teeth: 10



For sprockets that last longer than your diggers !!!

R & H Chrome Alloy ROLLERS • SHAKERS • SPROCKETS

SPROCKETS for HOOKED CHAIN

RH 673-1 DRIVE SPROCKET - 1" square bore



Diameter: 4-1/2"
Bore: 1" square
Pitch: 1.56"
Teeth: 10

RH 676 DRIVE SPROCKET



Diameter: 4-1/8"
Bore: 1-1/4" round
Pitch: 1.56"
Teeth: 9
Key: 1/4"

RH 676-S DRIVE SPROCKET



Diameter: 4-1/8"
Bore: 1-1/4" square
Pitch: 1.56"
Teeth: 9

RH 677 DRIVE SPROCKET



Diameter: 4-1/2"
Bore: 1-1/4" round
Pitch: 1.75"
Teeth: 9
Key: 1/4"

RH 678 DRIVE SPROCKET



Diameter: 4-1/2"
Bore: 1-1/4" round
Pitch: 1.56"
Teeth: 10
Key: 1/4"

RH 679-5 DRIVE SPROCKET



Diameter: 3-1/2"
Bore: 1-1/4" round
Pitch: 1.56"
Teeth: 8
Key: 1/4"

RH 679-7 DRIVE SPROCKET



Diameter: 3-7/8"
Bore: 1-1/4" round
Pitch: 1.75"
Teeth: 8
Key: 1/4"

RH 680 L and R DRIVE SPROCKET

To fit: Hesston/Utah



Diameter:
Outside: 6-1/4"
Hub: 5-3/8"
Inside: 3-5/8"
Pitch: 1.75"
Teeth: 12

RH 681 L and R DRIVE SPROCKET

To fit: Hesston/Utah



Diameter:
Outside: 6-1/2"
Hub: 5-3/8"
Inside: 3-3/8"
Pitch: 1.56"
Teeth: 14

RH 682 DRIVE SPROCKET



Diameter: 4"
Bore: 1-1/4" square
Pitch: 1.75"
Teeth: 8

R & H Chrome Alloy ROLLERS • SHAKERS • SPROCKETS

SPROCKETS for HOOKED CHAIN

RH 683 DRIVE SPROCKET



Diameter:
Outside: 7"
Hub: 5"
Inside: 3"
Pitch: 1.56"
Teeth: 12

RH 689 DRIVE SPROCKET



Diameter: 5-7/8"
Bore: 2" round
Pitch: 50mm
Teeth: 10
Key: 3/8"

RH 694 DRIVE SPROCKET



Diameter: 4-1/2"
Bore: 1-1/4" round
Pitch: 50mm
Teeth: 8
Key: 1/4"

RH 698-3/8" KEY DRIVE SPROCKET RH 698-1/2" KEY DRIVE SPROCKET



Diameter: 6-3/4"
Bore: 2" round
Pitch: 42mm
Teeth: 14
Key: 3/8" or 1/2"

RH 699-3/8" KEY DRIVE SPROCKET RH 699-1/2" KEY DRIVE SPROCKET



Diameter: 7-1/8"
Bore: 2" round
Pitch: 50mm
Teeth: 12
Key: 3/8" or 1/2"

SPROCKETS for BELTED CHAIN

RH 652 B-1 DRIVE SPROCKET



Diameter: 4-5/8"
Bore: 1" round
Pitch: 32mm
Teeth: 12
Key: 1/4"

RH 652 B-1.25 DRIVE SPROCKET



Diameter: 4-5/8"
Bore: 1-1/4" round
Pitch: 32mm
Teeth: 12
Key: 1/4"

RH 667 B-3/8" KEY DRIVE SPROCKET RH 667 B-1/2" KEY DRIVE SPROCKET



Diameter: 6-1/4"
Bore: 2" round
Pitch: 45mm
Teeth: 12
Key: 3/8" or 1/2"

RH 667 B-1.5 DRIVE SPROCKET



Diameter: 6-1/4"
Bore: 1-1/2" round
Pitch: 45mm
Teeth: 12
Key: 3/8"

RH 678 B DRIVE SPROCKET



Diameter: 4-1/2"
Bore: 1-1/4" round
Pitch: 40mm
Teeth: 10
Key: 1/4"

R & H Chrome Alloy ROLLERS • SHAKERS • SPROCKETS

SPROCKETS for BELTED CHAIN

RH 687 B DRIVE SPROCKET



Diameter: 4-1/4"
Bore: 1" round
Pitch: 36mm
Teeth: 10
Key: 1/4"

RH 688 B DRIVE SPROCKET



Diameter: 4-1/4"
Bore: 1-1/4" round
Pitch: 36mm
Teeth: 10
Key: 1/4"

RH 689 B DRIVE SPROCKET



Diameter: 5-7/8"
Bore: 2" round
Pitch: 50mm
Teeth: 10
Key: 3/8"

RH 691 B DRIVE SPROCKET



Diameter: 5"
Bore: 1-1/4" round
Pitch: 42mm
Teeth: 10
Key: 1/4"

RH 693 B DRIVE SPROCKET



Diameter: 4-1/8"
Bore: 1-1/4" round
Pitch: 45mm
Teeth: 8
Key: 1/4"

RH 694 B DRIVE SPROCKET



Diameter: 4-1/2"
Bore: 1-1/4" round
Pitch: 50mm
Teeth: 8
Key: 1/4"

RH 695 B DRIVE SPROCKET



Diameter: 5"
Bore: 2" round
Pitch: 42mm
Teeth: 10
Key: 3/8"

RH 697 B DRIVE SPROCKET



Diameter: 4-1/2"
Bore: 2" round
Pitch: 50mm
Teeth: 8
Key: 3/8"

RH 698 B-3/8" KEY DRIVE SPROCKET RH 698 B-1/2" KEY DRIVE SPROCKET



Diameter: 6-3/4"
Bore: 2" round
Pitch: 42mm
Teeth: 14
Key: 3/8" or 1/2"

RH 699 B-3/8" KEY DRIVE SPROCKET RH 699 B-1/2" KEY DRIVE SPROCKET



Diameter: 7-1/8"
Bore: 2" round
Pitch: 50mm
Teeth: 12
Key: 3/8" or 1/2"