



Setting the Standard for Wear!

R & H Chrome Alloy MISCELLANEOUS INDUSTRIAL PARTS

Learn more - www.rhmachine.com 1-800-321-6568

R & H Machine offers parts for different types of industrial equipment that do not fit easily into defined groups. We have accumulated these parts from many years of solving wear problems in many different industries. This group of parts reduces operating costs by performing better and lasting longer than parts currently used. Industrial parts tend to be larger than most agricultural parts, so we need to mention that we are limited to parts that are under sixty pounds and no larger than 18 inches in any direction. As demand is shown, we can make other parts to help solve other wear problems.

When developing a new part, we need to use the appropriate material for the application. We have several options available to us. Depending on impact and type of abrasion encountered, we will determine which material to use. We can make a Chrome Alloy casting; a welded fabrication with a Chrome alloy wear plate; or use impact resistant manganese steel for the casting. Our philosophy is to rebuild the original part using the weld-on Chrome Alloy plates when possible. If rebuilding is not a good option, we will make a full cast replacement part from either Chrome Alloy or manganese steel.

CHROME ALLOY

R & H Chrome Alloy is designed to resist abrasive wear resulting in longer life. Chrome Alloy was originally used in rock crushers, so it is very tough. As Chrome Alloy wears, the molecules of chrome carbide bend over in a lapping action instead of breaking off like softer steels. The surface becomes very smooth resulting in longer wear and less friction with abrasive material. As an additional bonus our Chrome Alloy parts will pull more easily than hardfaced parts. All R & H Machine's signature High Chrome Alloy parts are produced using a precise blend of alloys in our Caldwell, Idaho plant from the highest quality materials available.

MANGANESE ALLOY

R & H Machine makes available manganese alloy steel castings to fit a variety of high-impact areas. Our parts have been used successfully for many years. Manganese steel is designed for high impact and is very durable. As this material is used, the impact will make the steel harder and tougher. This process is known as work hardening. Manganese steel can be cut with a torch and welded, but drilling is extremely difficult, as the metal will work-harden under the bit. We sell manganese tips and hammers as cast so the customer can hard-face the parts to his own specifications. Parts can be rehard-faced as they wear, helping to prolong service life. We offer replacement tips to fit on many makes of wood-waste tub grinders. We have included a few examples, and others are available upon request. R & H Machine also offers manganese steel hammers to fit concrete recycling grinders and other high-impact crushing and grinding equipment. If manganese steel is the choice material for a replacement part it will also be carefully produced in our Caldwell, Idaho plant.

INSTRUCTIONS for WELDING

All R & H Chrome Alloy weld-on parts must be heated to a **bright cherry red** before welding. Use a mild-steel rod in a stick welder or a mild-steel wire in a wire-feed welder. Heat the casting, and, while it is still **red**, weld the part into place. The part to be repaired should be at room temperature. Room cool out of draft.

R & H Chrome Alloy MISCELLANEOUS INDUSTRIAL PARTS

ASPHALT PARTS

RH 960 PUG MILL TIP

Length: 6"
Width: 4"
Thickness: 1"
Holes: 5/8" plow



RH 961 PUG MILL TIP

NOTE: Replaces CR5011B04A

Length: 7-1/2"
Height: 4-1/2"
Bore: 2-3/16"
Holes: 1/2"



RH 962 PUG MILL PADDLE TIP

To fit: Clenco

Length: 7-3/4"
Width: 5-7/8"
Thickness: 1"
Holes: 5/8" hex



RH 968 PUG MILL TIP

Length: 6"
Width: 3-5/8"
Thickness: 1"
Hole: 1/2" hex



RH 963 ASPHALT-MACHINE CURVED PLATE

Length: 11-7/8"
Width: 6"
Thickness: 1/2"
Holes: 1/2" plow



RH 964 WELD-ON ASPHALT RECYCLER HOLDER

Length: 2-3/4"
Thickness: 2-1/8"
Hole: 3/4"



RH 965 PAVER PADDLE TIP

Length: 4"
Width: 3-7/8"
Hole: 1/2" hex



RH 966 ASPHALT DRUM SCRAPER

Length: 4-1/2"
Width: 2"
Thickness: 1-3/8"
Hole spacing: 2-1/4"
Holes: 1/2" hex



RH 969 CHAIN BRACKET for ASPHALT

Width: 6-3/8"
Height: 4"
Thickness: 1"
Holes: 1/2"
Hole spacing: 5"

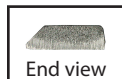


SCRAPER INSERT

RH 914 WELD-ON SCRAPER INSERT



Length: 11-3/4"
Width: 2-1/2"
Thickness: 3/4"

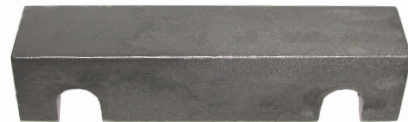


End view

CRUSHER PARTS

RH 999-GS-89 CRUSHER WEAR TRIANGLE

Length: 11-3/8"
End to slot: 1-1/4"
Between slots: 6-1/2"
Height: 2-3/4"
Slots: Width: 1-1/4"
Depth: 1-1/2"
Depth: 2-3/4"



R & H Chrome Alloy MISCELLANEOUS INDUSTRIAL PARTS

TUB GRINDER PARTS

RH 999-GS-05

To fit: Diamond Z

Length: 5-3/8"
Width: 3-3/8"
Thickness: 1-1/2"
Hole spacing: 2"
Bolt holes: 7/8"



RH 999-GS-06

To fit: Mobark

Length: 4-7/16"
Width: 2-7/8"
Thickness: 1-3/8"
Hole spacing: 1-5/8"
Bolt holes: 3/4"



RH 999-GS-07

To fit: Mobark

Length: 4-5/8"
Width: 2-3/8"
Thickness: 1-3/8"
Hole spacing: 1-3/4"
Bolt holes: 3/4"



RH 999-GS-22

To fit: Zehr

Length: 6-3/4"
Width: 3-7/8"
Thickness: 1-5/8"
Hole spacing: 2-1/4"
Bolt holes: 1"



EXTRACTOR TOOTH

RH 999-GS-97-M WELD-ON EXTRACTOR TOOTH

Length: 5-1/4"
Diameter: 1-3/4"



FLAME TABLE PYRAMID

RH 999-GS-65 FLAME TABLE PYRAMID

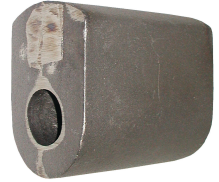
Length: 3-1/2"
Width: 2-1/8"
Slot: 1/2"



HAMMER TIPS

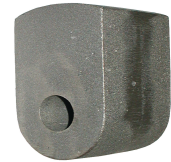
RH 999-GS-87-M LARGE CONCRETE HAMMER

Length: 7-1/4"
Width: 6-1/2"
Thickness: 4-1/2"
Hole: 2"



RH 999-GS-88-M SMALL CONCRETE HAMMER

Length: 5-3/4"
Width: 3-1/2"
Thickness: 3"
Hole: 1-1/4"



COMPOSTING PARTS

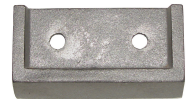
RH 427 WELD-ON COMPOST CAP

Length: 3"
Width: 2-1/4"
Thickness: 5/8"



RH 933 COMPOST TIP

Length: 6"
Width: 3-1/4"
Thickness: 1-1/2"
Hole spacing: 3"
Holes: 1/2", hex countersunk



RH 502 MN LEFT or RIGHT MANGANESE COMPOST BLADES

Length: 11-3/4"
Width: 4"
Thickness: 1/2"
Holes:
(Top): 1"; (Bottom): 5/8"
Hole spacing: 2"

